



US 92 (New Tampa Highway)

from County Line Road to Wabash Avenue
Polk County

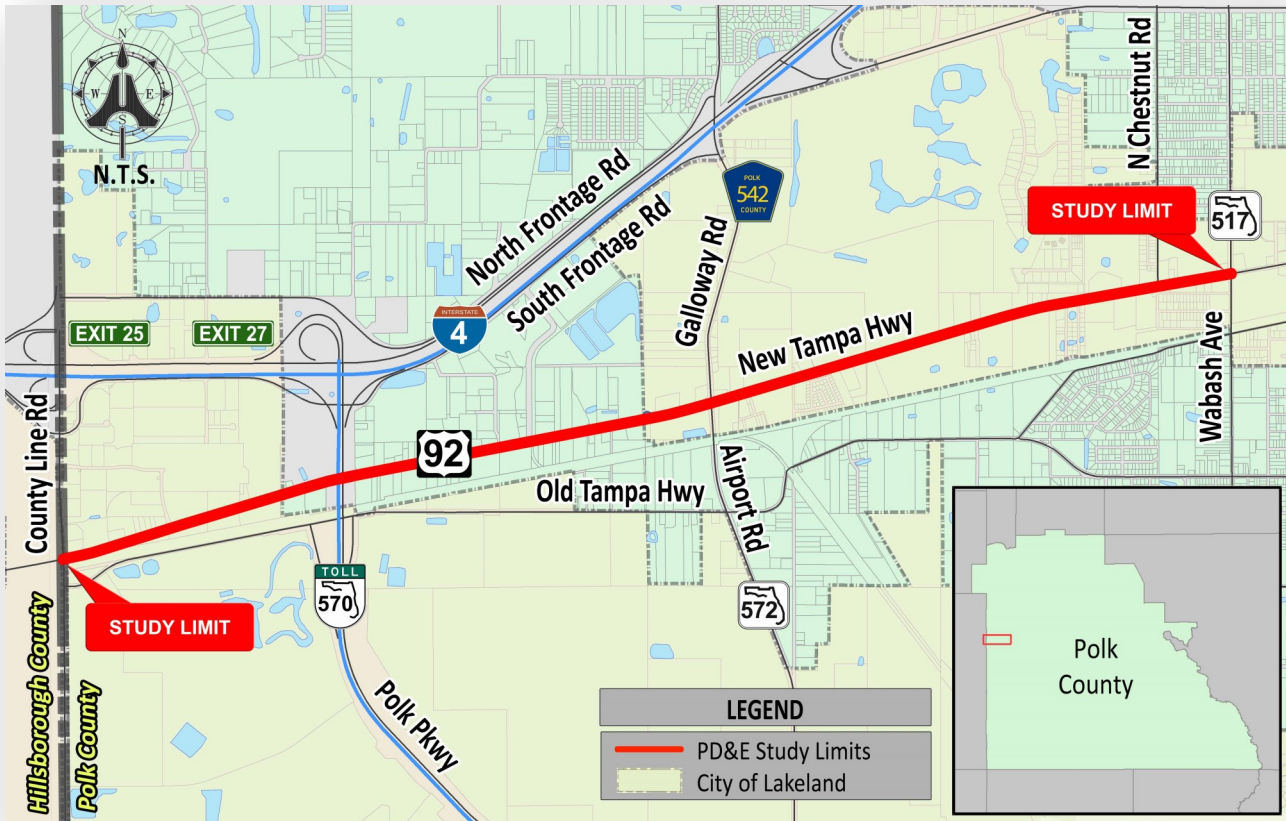
FDOT
Financial
Project Number:
433558-1-22-01


PD&E Study Complete

On November 27, 2017, the Florida Department of Transportation (FDOT) Office of Environmental Management (OEM) granted Location and Design Concept Acceptance for the US 92 Project Development and Environment (PD&E) study.

The project limits are along US 92 from County Line Road to Wabash Avenue in Polk County, a distance of approximately four miles. The proposed improvements include widening the existing US 92 roadway from two lanes to four lanes. Additional information is available on the project website at www.US92Lakeland.com. This project is now eligible to move to the next phase of development.

The environmental review, consultation, and other actions required by applicable federal environmental laws for this project are being, or have been, carried out by the FDOT pursuant to 23 U.S.C. 327 and a Memorandum of Understanding dated December 14, 2016 and executed by the Federal Highway Administration and FDOT.




 US 92 PD&E Study
 From County Line Road to Wabash Avenue
 Marlon Bizerra, PE, Project Manager
 Florida Department of Transportation
 Environmental Management Office
 PO Box 1249
 Bartow, Florida 33831

Visit the project web site:

www.US92Lakeland.com

Contact Us

If you have any questions regarding the project, please contact FDOT project manager, Marlon Bizerra, PE. His contact information is listed below.

Marlon Bizerra, PE, Project Manager
 Florida Department of Transportation
 PO Box 1249
 Bartow, FL 33831

Direct: 863-519-2250
 Email: Marlon.Bizerra@dot.state.fl.us

